

FEIDER



VACUUM INJECTOR EXTRACTOR

FIE1200W

USER GUIDE

CAUTION: Read the instructions before using this product!

CONTENTS

1. SAFETY INSTRUCTIONS.....	3
2. PRODUCT DESCRIPTION.....	7
3. INTENDED USE.....	7
4. TECHNICAL DATA.....	7
5. BEFORE STARTING THE APPLIANCE.....	8
6. OPERATION.....	12
7. CLEANING AND MAINTENANCE.....	13
8. DISPOSAL AND RECYCLING.....	14
9. DECLARATION OF CONFORMITY.....	15
10. WARRANTY.....	16
11. PRODUCT FAILURE.....	17
12. WARRANTY EXCLUSIONS.....	18

1. SAFETY INSTRUCTIONS

IMPORTANT!

When using the appliance, a few safety precautions must be observed to avoid injuries and damage. Please read the complete operating instructions with due care. Keep this manual in a safe place, so that the information is available at all times. If you give the appliance to any other person, hand over these operating instructions as well.

We cannot accept any liability for damage or accidents which arise due to a failure to follow these instructions and the safety instructions.

CAUTION

Read all safety regulations and instructions. Any failures made in following the safety regulations and instructions may result in an electric shock, fire and/or serious injury.

Keep all safety regulations and instructions in a safe place for future use.

This appliance can be used by children aged from 8 years and above and persons with reduced physical, sensory or mental capabilities or lack of experience and knowledge if they have been given supervision or instruction concerning use of the appliance in a safe way and understand the hazards involved. Children shall not play with the appliance. Cleaning and user maintenance shall not be made by children without supervision.

● **IMPORTANT:** Read the operating instructions before

- assembling and using the appliance for the first time.
- Check that the mains voltage is the same as the mains voltage specified on the rating plate.
 - Pull out the power plug in the following circumstances. Whenever the appliance is not in use, before opening the appliance and before all cleaning and maintenance work.
 - Never clean the appliance with solvents.
 - Never pull the plug out of the socket by pulling the cable.
 - Never leave the appliance unattended when operational.
 - Keep away from children.
 - Take care to ensure that the power cable does not get damaged by being run over, crushed, pulled or suchlike.
 - Do not use the machine if the power cable is in a less than perfect condition.
 - If the power cable has to be replaced, the replacement must comply with the design specifications of the manufacturer. Power cable: H05 VV - F 2 x 0,75 mm². Find service agent or similarly qualified persons for the replacement.
 - Never vacuum the following: Burning matches, smoldering ash and cigarette butts, combustible, caustic, inflammable or explosive substances, vapour or liquids.
 - This appliance is not suitable for vacuuming dust

which can be harmful to health.

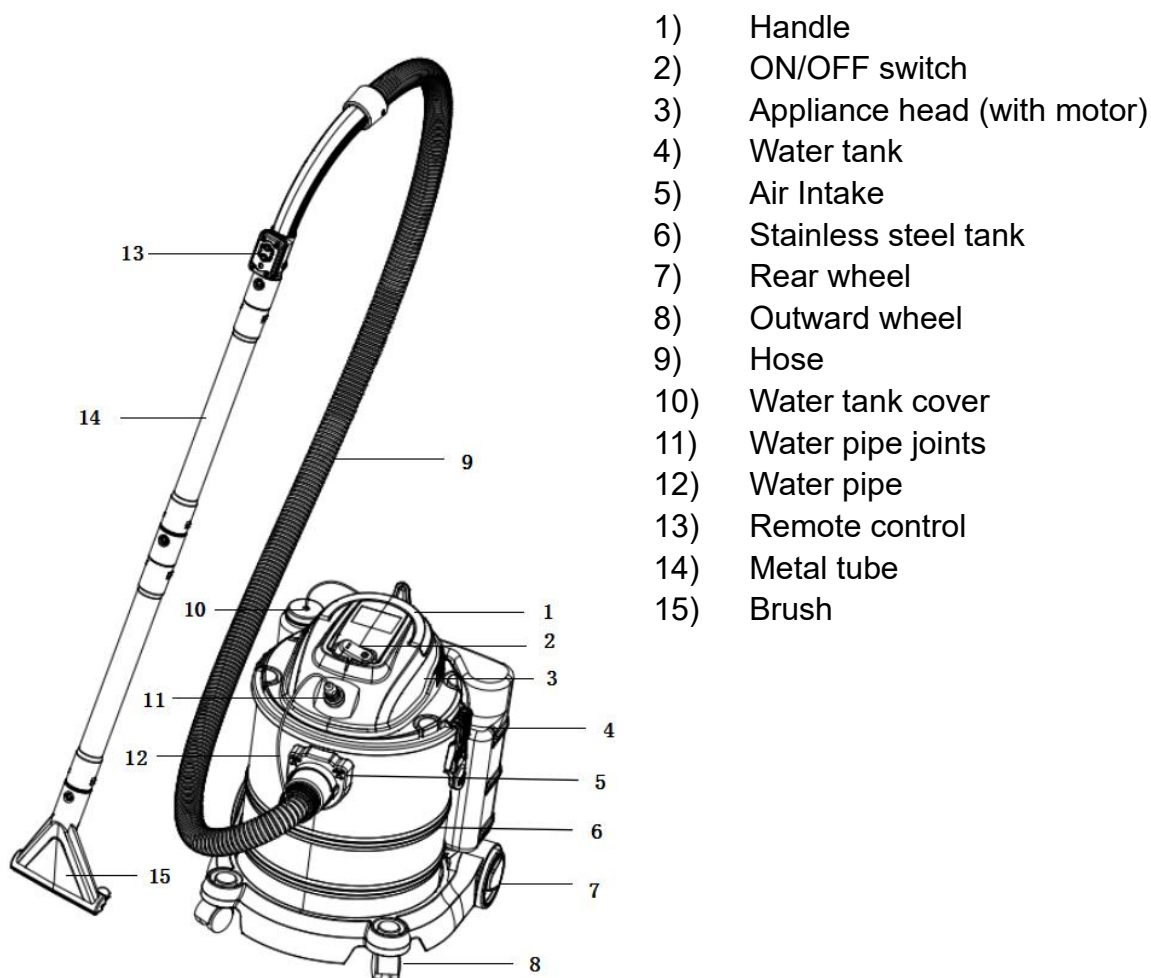
- Store the appliance in a dry indoor location.
- Never use the appliance if it is damaged.
- Only allow the appliance to be serviced by an authorized customer service center.
- Only use the appliance to carry out work for which has been designed.
- Use only genuine accessories and spare parts.
- The guidelines in the operating instructions must be observed. The safety and accident-prevention regulations from the lawgiver are also to be observed.
- **IMPORTANT!** Hazardous material must not be extracted with the ash filter.
- Do not extract ashes from prohibited fuels.
- Do not use the ash filter to extract hot, glowing or inflammable objects (e.g. charcoal, cigarettes ...).
- **IMPORTANT.** The Injector Extractor Vacuum is not suitable for vacuuming soot or fine dust.
- **IMPORTANT!** The extracted material must not exceed a temperature of 40°C.
- **IMPORTANT!** If this temperature of the extracted material exceeds 40°C, there is a risk of fire.
- **IMPORTANT!** If the permissible temperature is exceeded, the extractor, the ash filter and the hoses could be damaged.
- **IMPORTANT!** Extracted material which looks as though it has cooled off on the outside may still be hot on the inside. Hot extracted material could be set alight again

in the air current.

- Before beginning extraction, please wait until the material is completely cooled off. Hot ashes should not be purged with water, as the sudden temperature difference can cause ruptures to the chimney.
- Wait at least 24 hours before vacuuming an oven or a fireplace in order to be sure that the fire has gone out and the ash has cooled down.
- Check the hoses, the ash filter and the extractor regularly when extracting, to assess levels of heating.
- If the appliance heats up, switch it off, pull the mains plug out and remove the filter bag immediately. Separate the ash filter from the extractor and remove the extracted material. Next, let the extractor and the ash filter cool off outside, under supervision.
- If the supply cord is damaged, it must be replaced by the manufacturer, its service agent or similarly qualified persons in order to avoid a hazard.
- Cold ash is ash which has cooled for a sufficiently long time and no longer contains any glowing embers. This can be checked by combing through the ash with a metal object before you use the Injector Extractor Vacuum. Cold ash no longer radiates any perceivable heat.
- After and before vacuum cleaning, empty and clean the tank in order to prevent the accumulation of materials which could present a fire hazard in the vacuum cleaner.

- The plug must be removed from the socket-outlet before cleaning or maintaining the appliance.
- Prepare the solution according to the instructions in this manual (non-foaming detergent/water ratio is 1:40). The solution must not contain any acids, bases, or substances that are harmful to the environment.

2. PRODUCT DESCRIPTION



- 1) Handle
- 2) ON/OFF switch
- 3) Appliance head (with motor)
- 4) Water tank
- 5) Air Intake
- 6) Stainless steel tank
- 7) Rear wheel
- 8) Outward wheel
- 9) Hose
- 10) Water tank cover
- 11) Water pipe joints
- 12) Water pipe
- 13) Remote control
- 14) Metal tube
- 15) Brush

3. INTENDED USE

The Injector Extractor Vacuum is suitable for vacuuming cold ash or cold material residues from fireplaces, charcoal ovens, ash-trays or barbecues.

The machine is to be used only for its prescribed purpose. Any other use is deemed to be a case of misuse.

Please note that our appliance has not been designed for use in commercial or industrial applications. Our warranty will be voided if the appliance is used in commercial, trade or industrial businesses or for equivalent purposes.

4. TECHNICAL DATA

Model	FIE1200W
Mains voltage	220-240V~ 50/60Hz
Power input	1200W
Suction	>16 Kpa
INGRESS PROTECTION	IPX4
Vacuum volume	25 L
Clean Water tank	4.5 L
Hose	1.5m
Pump power	19-25W
Power cable	4M
Weight	7.2kg
Power consumption in off mode	0.00W
This equipment's power management function is inappropriate as for the intended use.	

5. BEFORE STARTING THE APPLIANCE

IMPORTANT!

- Before you connect the appliance to the mains supply make sure that the data on the rating plate are identical to the mains data.
- The appliance may only be connected to a shockproof socket.

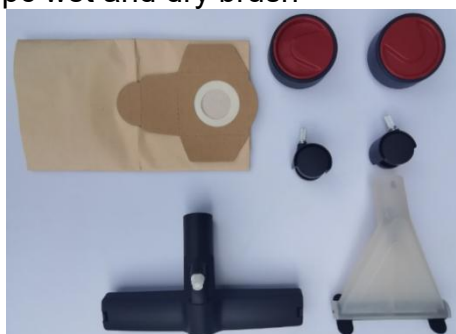
5.1 UNPACKING

- 1) Unpack all parts and lay them on a flat stable surface
- 2) Make sure the delivery contents are complete and free of damage. If you find that parts are missing or show damage, do not use the product but contact your dealer/service centre. Do not use the product unless missing parts have been delivered in addition or defective parts have been replaced. Using an incomplete or damaged product represents a hazard to people and property.
- 3) Ensure that you have all the accessories and tools needed for assembly and operation.

5.2 SCOPE OF THE DELIVERY

Carefully unpack the carton and check that it is complete:

- 1) Tank body (motor & sponge filter, water tank assembled)
- 2) 1pc dust bag
- 3) 4pcs wheels(2pcs+2pcs)
- 4) 1pc wet and dry brush
- 5) 1pc Water spray clean brush
- 6) 1pc crevice nozzle
- 7) 1.5M hose
- 8) 2pcs metal tube



5.3 ASSEMBLING THE APPLIANCE

1) Assemble 2pcs outward wheels (8) and 2pcs rear wheels(7)



2) Disassembly/ Assembly of the filter

⚠️ IMPORTANT! Never use the ash vacuum without the filter! Always ensure that the filters are perfectly secure.
slip the supplied foam filter over the filter cage



- Use the supplied sponge filter for wet vacuum-cleaning.
- Use the supplied dust bag for dry vacuum-cleaning.

3) Fitting the suction hose

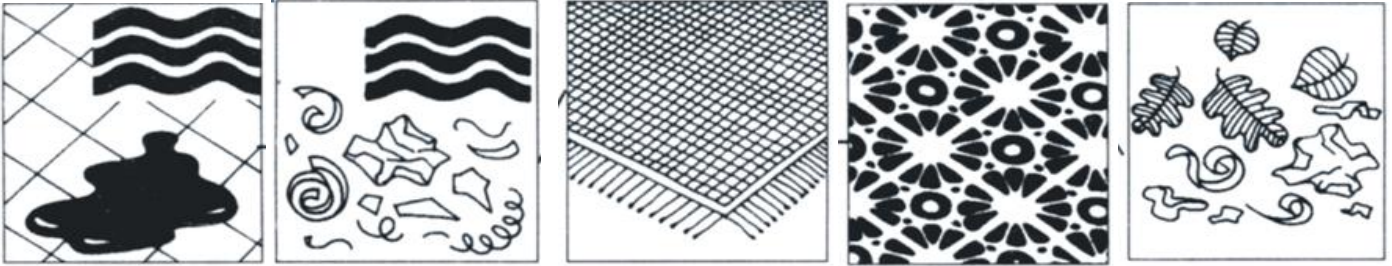
Connect the hose (9) to the corresponding connector on the vacuum cleaner, depending on the application required.



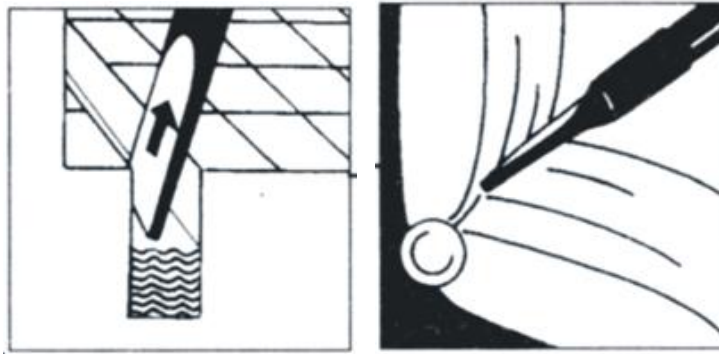
4) Fitting the metal tube/brush



- Wet and dry brush is for vacuuming solids and liquids over medium to large areas;
- Water spray clean brush is for vacuuming liquids over medium to large areas;



- Crevice nozzle is specially designed for cleaning crevices and edges.



5) Fitting the water pipe

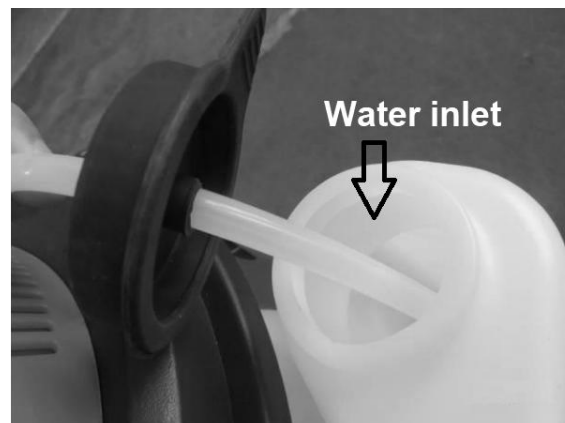


6) Adding water

Open the cap, add water to the tank.

Note: You can add detergent to the water as needed.

Prepare the solution according to the instructions in this manual (non-foaming detergent/water ratio is 1:40). The solution must not contain any acids, bases, or substances that are harmful to the environment.



6. OPERATION

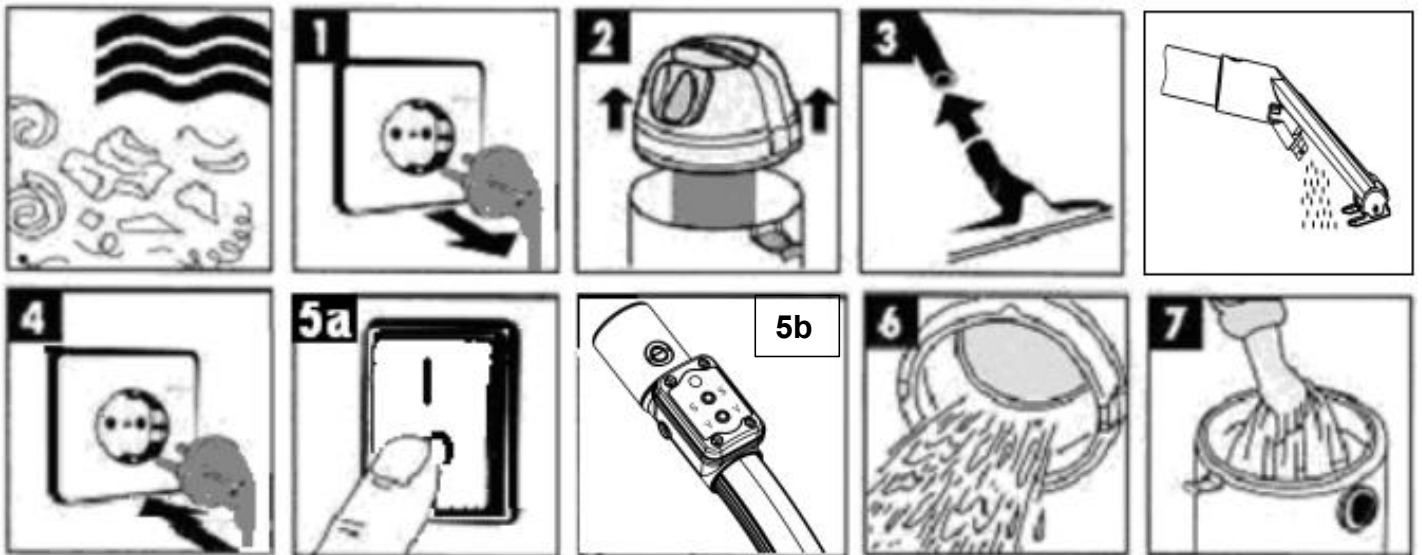
⚠ IMPORTANT! DO not connect the appliance to the mains supply before all accessories assembly.

6.1 ON/OFF SWITCH

- 1) Press the ON/OFF switch (2) "I" position. the vacuum cleaner is powered up but not working.
- 2) Press the " S " button to start the wet or dry vacuum cleaner function; the second press, vacuum cleaner function stopped.
- 3) Press the " V " button to start the water spray function. The second press the pump motor stopped.
- 4) To stop the machine, press the ON/OFF switch (2) "O" position.



6.2 WET VACUUM - CLEANING



Unplug before change filter (Figure 1)

Pull the supplied sponge filter over the filter basket (Figure 2) for wet vacuum-cleaning.

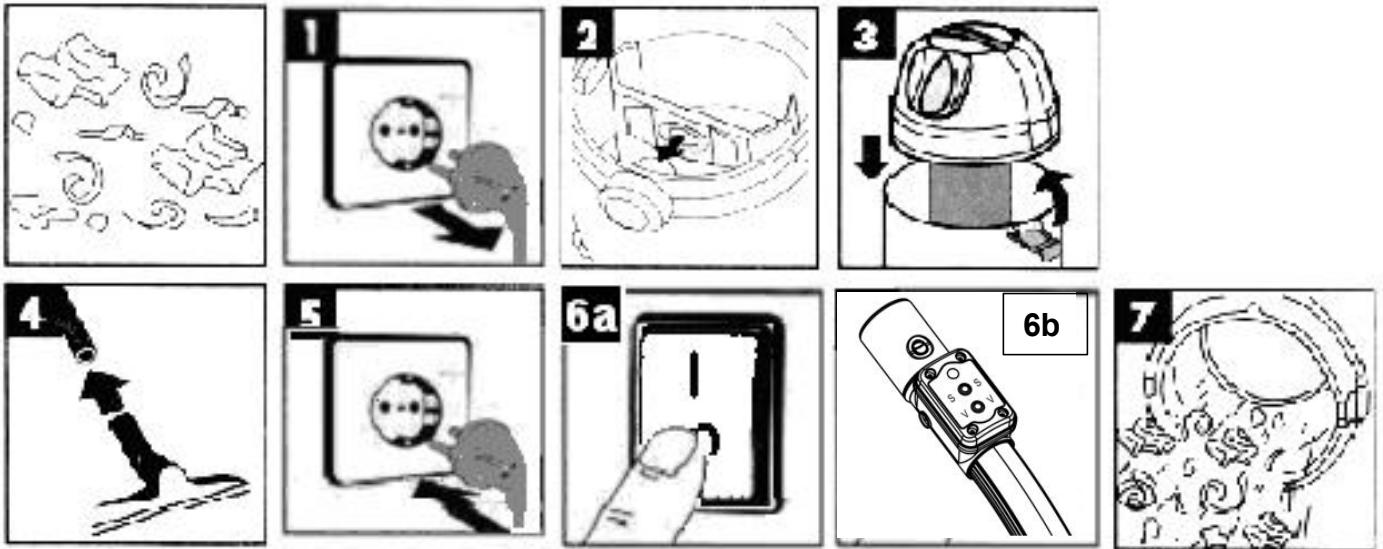
Insert the plug and turn on the switch, then press the remote control, and the device works (Figure 4 & 5a or 5b)

NOTE: When the switch is pressed to the "I" position, the vacuum cleaner is powered up but not working; press the remote "S" button to start the vacuum motor, press the remote " V " to start the pump motor; If press the button again, then the motor stopped. When press the switch "o" position, the machine is cut off and the equipment stops working.

Observe the amount of water in the bucket.

The dust bag included upon delivery is not suitable for wet vacuum-cleaning!

6.3 DRY VACUUM-CLEANING



Unplug before change filter (Figure 1), then take out the bag and empty the dust or replace the bag. Slip the dust bag onto the socket (figure 2) for dry vacuum-cleaning.

Insert the plug and turn on the switch, then press the remote control, and the device works (Figure 5 & 6a or 6b)

Note: The dust bag is suitable only for dry vacuum-cleaning!

7. CLEANING AND MAINTENANCE

! IMPORTANT!

Always pull out the mains power plug before starting any cleaning work.

7.1 CLEANING

! Keep all safety devices, air vents and the motor housing free of dirt and dust as far as possible.

! We recommend that you clean the appliance immediately after you use it.

7.2 CLEANING THE APPLIANCE HEAD (3)

Clean the appliance regularly with a damp cloth and some soft soap. Do not use cleaning agents or solvents; these may be aggressive to the plastic parts in the appliance.

7.3 CLEANING THE STAINLESS STEEL TANK (6)

The tank can be cleaned with a damp cloth and some soft soap or under running water, depending on the amount of dirt.

7.4 CLEANING THE SPONGE FILTER

Take off the sponge filter, and wash by water.

7.5 SERVICING

At regular intervals and before each use, check that the filters in the Injector Extractor Vacuum cleaner are securely fitted.

7.6. ORDERING SPARE PARTS

Please provide the following information on all orders for spare parts:

- Model/type of the appliance
- Part number of the required spare part.

8. DISPOSAL AND RECYCLING

The equipment is supplied in packaging to prevent it from being damaged in transit. The raw materials in this packaging can be reused or recycled. The equipment and its accessories are made of various types of material, such as metal and plastic.

Defective components must be disposed of as special waste. Ask your dealer or your local council.

Old devices must not be disposed of with household waste!



— This symbol indicates that this product must not be disposed of together with domestic waste in compliance with the Directive (2012/19/EU) pertaining to waste electrical and electronic equipment (WEEE). This product must be disposed of at a designated collection point. This can occur, for example, by handing it in at an authorised collecting point for the recycling of waste electrical and electronic equipment. Improper handling of waste equipment may have negative consequences for the environment and human health due to potentially hazardous substances that are often contained in electrical and electronic equipment.

By properly disposing of this product, you are also contributing to the effective use of natural resources. You can obtain information on collection points for waste equipment from your municipal administration, public waste disposal authority, an authorized body for the disposal of waste electrical and electronic equipment or your waste disposal company.

9. DECLARATION OF CONFORMITY



BUILDER SAS

32 rue Aristide Bergès - Z.I. du Casque - 31270 Cugnaux - France

States that the designated below machine :
VACUUM INJECTOR EXTRACTOR
Model: FIE1200W

S/N: 20250900001-20250900230

is in conformity with the essential requirements and other relevant provisions of the applicable European Directives, based on the application of European harmonized standards.
Any unauthorized modification of the apparatus voids this declaration.

Satisfies the requirement of the Council Directives:
EC- Low voltage directive 2014/35/EU
EC Directive of Electromagnetic Compatibility 2014/30/EU
EC REGULATION (EU) 2023/826
Rohs Directive 2011/65/EU & (EU) 2015/863

and conforms with the norms:
EN 60335-1:2012+A11:2014+AC: 2014+ A13: 2017 + A1:2019 + A14:2019 +
A2:2019 + A15:2021
EN 60335-2-2:2010+A11:2012+A1:2013
EN 60335-2-10:2003+A1:2008
EN 62233:2008
EN IEC 55014-1:2021
EN IEC 55014-2:2021
EN IEC 61000-3-2:2019+A1:2021
EN 61000-3-3:2013+A1:2019+A2:2021

Responsible of technical file: M. Olivier Patriarca
Done at Cugnaux : 21/07/2025

Philippe MARIE/PDG

10. WARRANTY

The manufacturer guarantees the product against defects in material and workmanship for a period of 5 years from the date of the original purchase. It can be extended by one year if the user subscribes to website of myswap. The warranty only applies if the product is for household use. The warranty does not cover breakdowns due to normal wear and tear.

The manufacturer agrees to replace parts identified as defective by the designated distributor. The manufacturer does not accept responsibility for the replacement of the machine, in whole or in part, and/or ensuing damage.

The warranty does not cover breakdowns due to:

- insufficient maintenance.
- abnormal assembly, adjustment or operations of the product.
- parts subject to normal wear and tear.

The warranty does not extend to:

- shipping and packaging costs.
- using the tool for a purpose other than that for which it was designed.
- the use and maintenance of the machine done in a manner not described in the user manual.

Due to our policy of continuous product improvement, we reserve the right to alter or change specifications without notice. Consequently, the product may be different from the information contained therein, but a modification will be undertaken without notice if it is recognized as an improvement of the preceding characteristic.

READ THE MANUAL CAREFULLY BEFORE USING THE MACHINE.

When ordering spare parts, please indicate the part number or code, you can find this in the spare parts list in this manual. Keep the purchase receipt; without it, the warranty is invalid. To help you with your product, we invite you to contact us by phone or via our website:

+33 (0)9.70.75.30.30

<https://services.swap-europe.com/contact>

You must create a "ticket" via the web platform.

Register or create your account.

Indicate the reference of the tool.

Choose the subject of your request.

Describe your problem.

Attach these files: invoice or sales receipt, photo of the identification plate (serial number), photo of the part you need (for example: pins on the transformer plug which are broken).



11. PRODUCT FAILURE

WHAT TO DO IF MY MACHINE BREAKS DOWN?

If you bought your product in a store:

- Make sure that your machine is complete with all accessories supplied, and clean! If this is not the case, the repairer will refuse the machine.
- Go to the store with the complete machine and with the receipt or invoice.

If you bought your product on a website:

- Make sure that your machine is complete with all accessories supplied, and clean! If this is not the case, the repairer will refuse the machine.
- Create a SWAP-Europe service ticket on the site: <https://services.swap-europe.com> When making the request on SWAP-Europe, you must attach the invoice and the photo of the nameplate (serial number).

Contact the repair station to make sure it is available before dropping off the machine.

Go to the repair station with the complete machine packed, accompanied by the purchase invoice and the station support sheet downloadable after the service request is completed on the SWAP-Europe site

Please keep your original packaging to allow for after-sales service returns or pack your machine with a similar cardboard box of the same dimensions.

For any question concerning our after-sales service you can make a request on our website <https://services.swap-europe.com>

Our hotline remains available at +33 (9) 70 75 30 30.



12. WARRANTY EXCLUSIONS

THE WARRANTY DOES NOT COVER:

- Start-up and setting up of the product.
- Damage resulting from normal wear and tear of the product.
- Damage resulting from improper use of the product.
- Damage resulting from assembly or start-up not in accordance with the user manual.
- Periodic and standard maintenance events.
- Actions of modification and dismantling that directly void the warranty.
- Products whose original authentication marking (brand, serial number) has been degraded, altered or withdrawn.
- Replacement of consumables.
- The use of non-original parts.
- Breakage of parts following impacts or projections.
- Accessories breakdowns.
- Defects and their consequences linked to any external cause.
- Loss of components and loss due to insufficient screwing.
- Cutting components and any damage related to the loosening of parts.
- Overload or overheating.
- Poor power supply quality: faulty voltage, voltage error, etc.
- Damages resulting from the deprivation of enjoyment of the product during the time necessary for repairs and more generally the costs related to the immobilization of the product.
- The costs of a second opinion established by a third party following an estimate by a SWAP-Europe repair station
- The use of a product which would show a defect or a breakage which was not the subject of an immediate report and/or repair with the services of SWAP-Europe.
- Deterioration linked to transport and storage*.

* In accordance with transport legislation, damage related to transport must be declared to carriers within 48 hours maximum after observation by registered letter with acknowledgement of receipt. This document is a supplement to your notice, a non-exhaustive list.

Attention: all orders must be checked in the presence of the delivery person. In case of refusal by the delivery person, it you must simply refuse the delivery and notify your refusal.

Reminder: the reserves do not exclude the notification by registered letter with acknowledgement within 72 hours.

Information:

Thermal devices must be wintered each season (service available on the SWAP-Europe site). Batteries must be charged before being stored.

FEIDER



BUILDER SAS

32, rue Aristide Bergès - ZI 31270 Cugnaux – France

www.builder-systems.com

Made in PRC